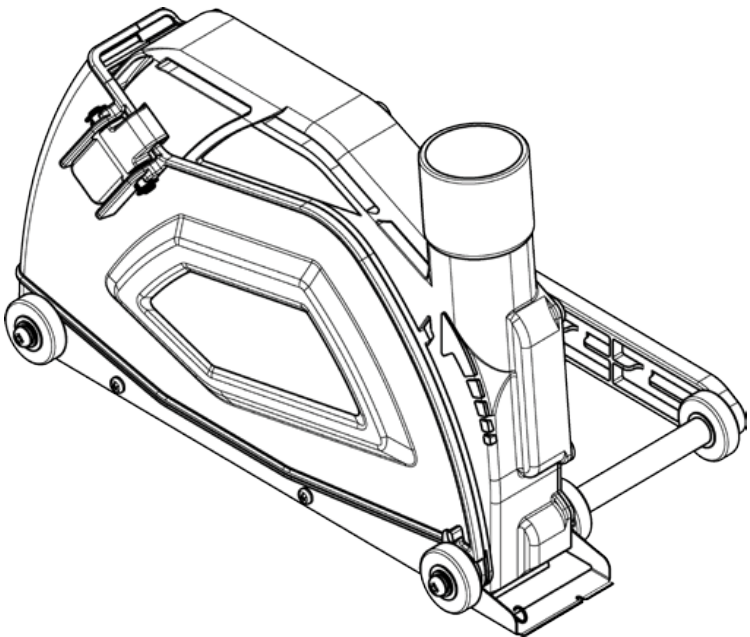


## **Alpha<sup>®</sup> Ecoguard W9 Instruction Manual**

*Alpha<sup>®</sup> Ecoguard W9 Bedienungsanleitung*  
*Alpha<sup>®</sup> Ecoguard W9 Manual de instrucciones*  
*Manuel d'instructions Alpha<sup>®</sup> Ecoguard W9*  
*Alpha<sup>®</sup> Ecoguard W9 Manuale di istruzioni*  
*Alpha<sup>®</sup> Ecoguard W9 Manual de Instruções*



**Part No: ECOGRDW9**

Printed Version: 02/2020

 **Alpha Professional Tools<sup>®</sup>**

103 Bauer Drive, Oakland, NJ 07436 • 800-648-7229 • Fax: 800-286-0114  
[www.alpha-tools.com](http://www.alpha-tools.com)

## TABLE OF CONTENTS

<b>ENGLISH</b>	
Introduction .....	3
Tool Setup.....	4
Operation.....	7
<b>DEUTSCH</b>	
Einleitung .....	3
Werkzeugeinrichtung .....	4
Operation .....	7
<b>ESPAÑOL</b>	
Introducción .....	3
Configuración de herramienta .....	4
Operación .....	7
<b>FRANÇAIS</b>	
Introduction .....	3
Configuration de l'outil .....	4
Opération .....	7
<b>ITALIANO</b>	
Introduzione.....	3
Impostazione strumento .....	4
Operazione .....	7
<b>PORTUGUÊS</b>	
Introdução.....	3
Configuração da ferramenta .....	4
Operação .....	7

### *English*

To view the Ecoguard W9 Parts List, Schematics and Grinder Compatibility Chart, visit us on the web at [www.alpha-tools.com](http://www.alpha-tools.com)

### *Deutsch*

So zeigen Sie die Ecoguard W9-Teileliste, die Schaltpläne und die Kompatibilitätstabelle für Schleifmaschinen an: Besuchen Sie uns im Internet unter [www.alpha-tools.com](http://www.alpha-tools.com)

### *Español*

Para ver la Lista de piezas, esquemas y tabla de compatibilidad de amoladoras Ecoguard W9, visítenos en la web en [www.alpha-tools.com](http://www.alpha-tools.com)

### *Français*

Pour afficher la liste des pièces, les schémas et le tableau de compatibilité des broyeurs Ecoguard W9, visitez-nous sur le web à [www.alpha-tools.com](http://www.alpha-tools.com)

### *Italiano*

Per visualizzare l'elenco delle parti di Ecoguard W9, gli schemi e la tabella di compatibilità della smerigliatrice, visitateci sul Web all'indirizzo [www.alpha-tools.com](http://www.alpha-tools.com)

### *Português*

Para visualizar a Lista de Peças Ecoguard W9, a Tabela de Compatibilidade de Esquemas e Moedores, visite-nos na web em [www.alpha-tools.com](http://www.alpha-tools.com)

## INTRODUCTION

*English*

Thank you for purchasing the Alpha® Ecoguard W9 Dust Collection Cover. The Ecoguard W9 must be used with a vacuum, or other dust collection system. To ensure correct use, read this Instruction Manual and the Instruction Manual for the power tool and follow the operating instructions. Keep this manual in a place where operators can access it easily whenever necessary!

## EINLEITUNG

*Deutsch*

Vielen Dank, dass Sie sich für den Alpha® Ecoguard W9 Staubschutz entschieden haben. Der Ecoguard W9 muss mit einem Staubsauger oder einem anderen Staubsammelsystem verwendet werden. Lesen Sie diese Bedienungsanleitung und die Bedienungsanleitung des Elektrowerkzeugs und befolgen Sie die Bedienungsanweisungen, um eine ordnungsgemäße Verwendung zu gewährleisten. Bewahren Sie dieses Handbuch an einem Ort auf, an dem der Bediener bei Bedarf leicht darauf zugreifen kann!

## INTRODUCCIÓN

*Español*

Gracias por comprar la cubierta de recolección de polvo Alpha® Ecoguard W9. El Ecoguard W9 debe usarse con una aspiradora u otro sistema de recolección de polvo. Para garantizar un uso correcto, lea este Manual de instrucciones y el Manual de instrucciones de la herramienta eléctrica y siga las instrucciones de funcionamiento. ¡Mantenga este manual en un lugar donde los operadores puedan acceder fácilmente cuando sea necesario!

## INTRODUCTION

*Français*

Merci d'avoir acheté le couvercle de dépolluissage Alpha® Ecoguard W9. L'Ecoguard W9 doit être utilisé avec un aspirateur ou un autre système de collecte de poussière. Pour garantir une utilisation correcte, lisez ce manuel d'instructions et le manuel d'instructions de l'outil électrique et suivez les instructions d'utilisation. Conservez ce manuel dans un endroit où les opérateurs peuvent y accéder facilement en cas de besoin!

## INTRODUZIONE

*Italiano*

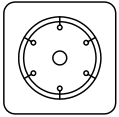
Grazie per aver acquistato la copertina della collezione di polveri Alpha® Ecoguard W9. Ecoguard W9 deve essere utilizzato con un aspirapolvere o un altro sistema di raccolta della polvere. Per un uso corretto, leggere questo Manuale di istruzioni e il Manuale di istruzioni dell'utensile elettrico e seguire le istruzioni per l'uso. Conservare questo manuale in un luogo in cui gli operatori possano accedervi facilmente ogni volta che è necessario!

## INTRODUÇÃO

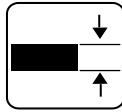
*Português*

Obrigado por adquirir a tampa para coleta de pó Alpha® Ecoguard W9. O Ecoguard W9 deve ser usado com vácuo ou outro sistema de coleta de poeira. Para garantir o uso correto, leia este manual de instruções e o manual de instruções da ferramenta elétrica e siga as instruções de operação. Mantenha este manual em um local onde os operadores possam acessá-lo facilmente sempre que necessário!

## SPECIFICATIONS



180~230mm

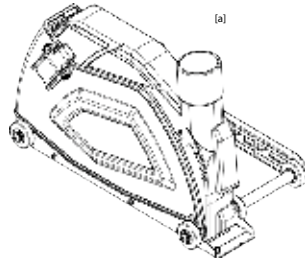


5-60mm (230mm Blade)

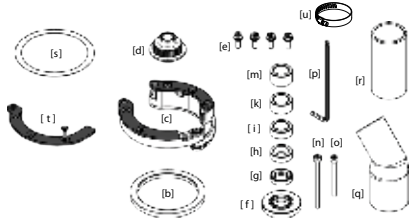
## TOOL SETUP

### ► OVERVIEW

Überblick  
visión general  
Aperçu  
panoramica  
Visão geral

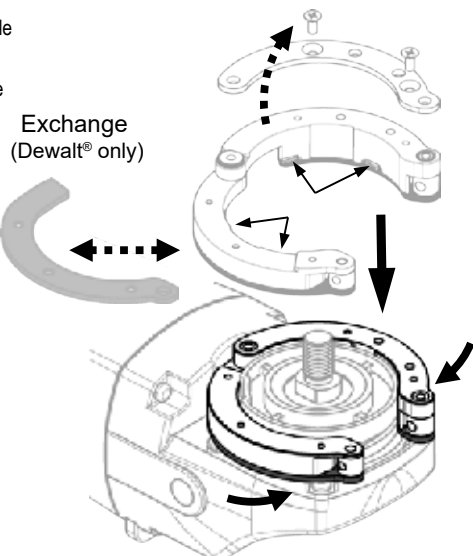
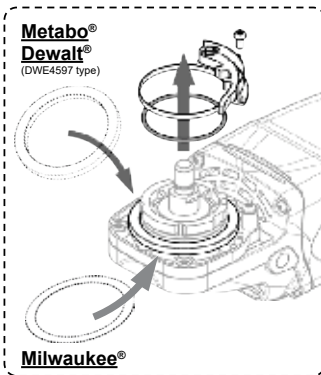


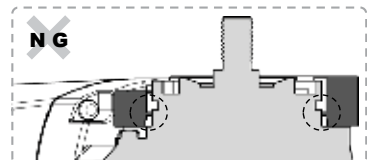
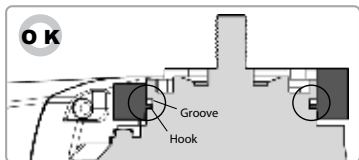
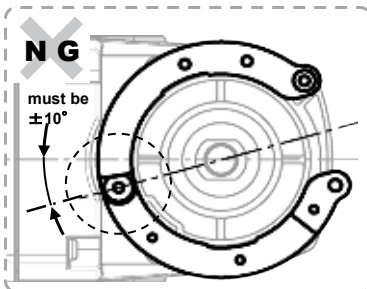
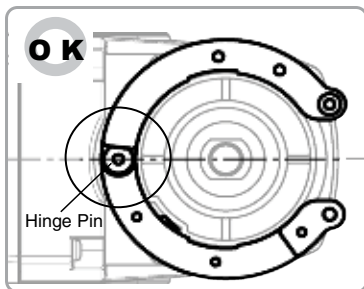
(a) Ecoguard Industrial Dust Collection Cover W9  
(b) Collar Spacer (c) Adapter (d) Positioning Collar (5/8"-11) (e) Flange Bolt (f) Base Flange (g) Spacer T6.1 (h) Spacer T8.0 (i) Spacer T9.4 (k) Spacer T12.2 (m) Spacer T13.8 (n) Bolt (L60) (o) Bolt (L45) (p) Hex Wrench (q) Swing Duct (r) Rubber Hose Connector (s) Mount Sheet (t) DW Plate (u) Stainless Steel Hose Clamp



### ► ATTACHING MULTI-ADAPTER SYSTEM

Anbringen des Multi-Adapter-Systems  
Conexión de sistema de adaptador múltiple  
Fixation d'un système multi-adaptateurs  
Collegamento del sistema multi-adattatore  
Conexão do sistema multi-adaptador





## ► ATTACHING DUST COLLECTION COVER

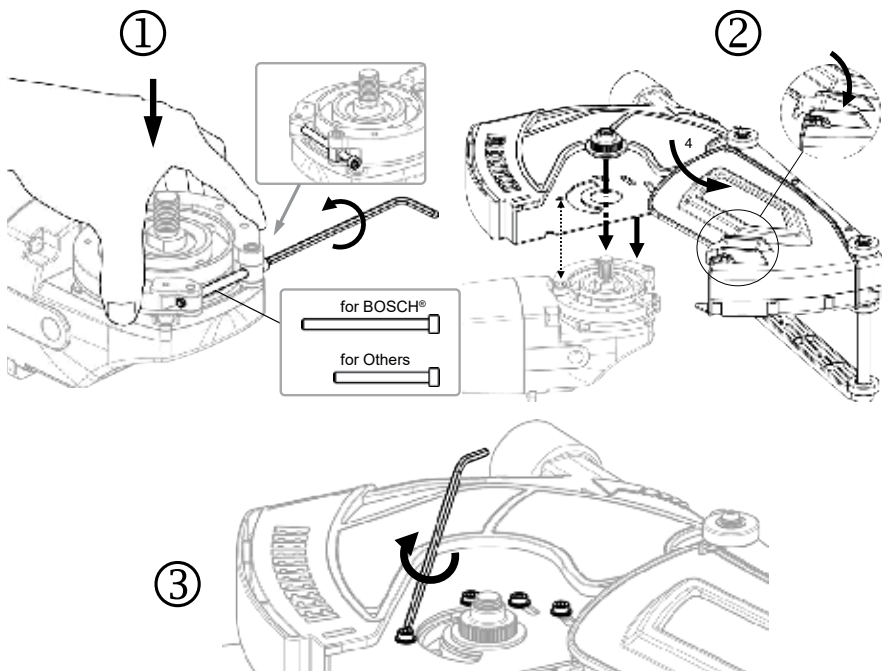
Anbringen der Staubschutzkappe

Colocación de la cubierta de recolección de polvo

Fixation du couvercle de dépoussiérage

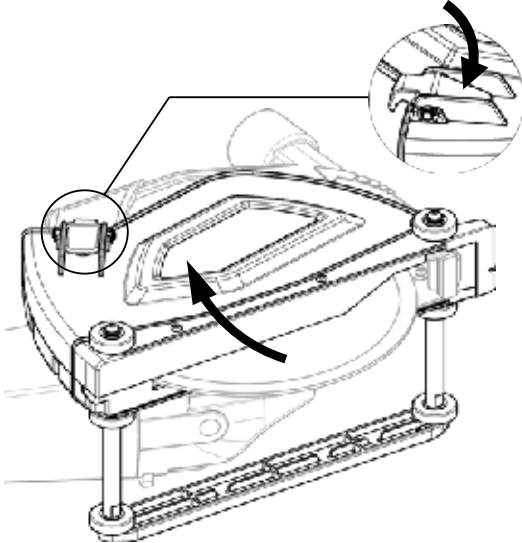
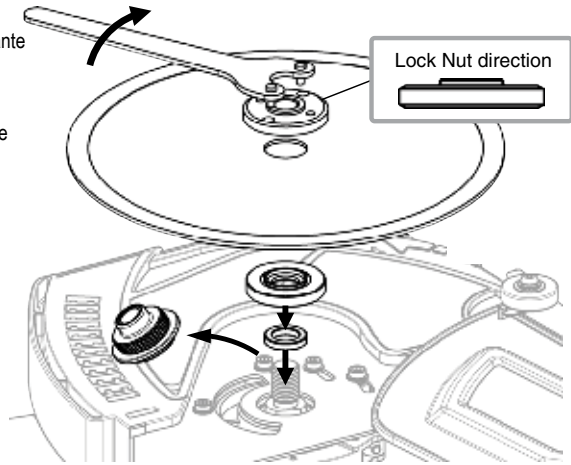
Applicazione del coperchio della raccolta polvere

Colocar a tampa da coleção de poeira

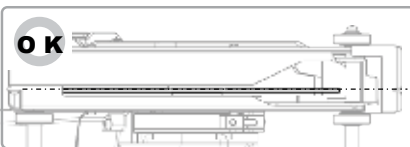


► **ATTACHING THE DIAMOND BLADE**

Anbringen der Diamantklinge  
 Colocación de la hoja de diamante  
 Fixation de la lame diamant  
 Attacco della lama diamantata  
 Anexando a lâmina de diamante



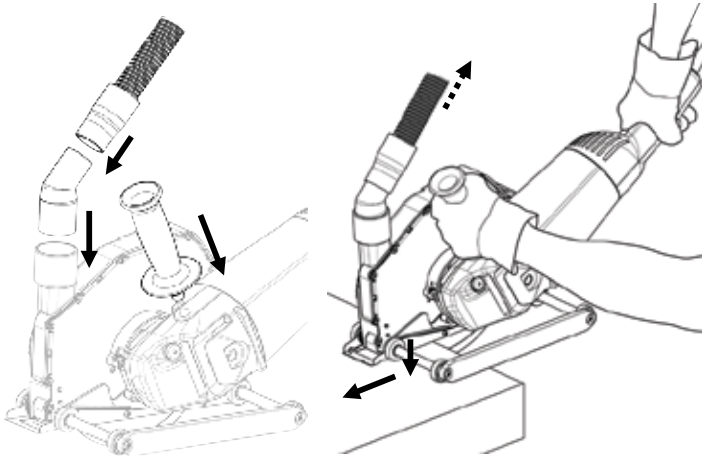
BOSCH®	HIKOKI®	Milwaukee®	Makita®	Metabo®	Makita®	
					DWE4517 type	DWE4597 type
[g] T6.1		[h] T8.0	[i] T9.4		[k] T12.2	[m] T13.8



## OPERATION

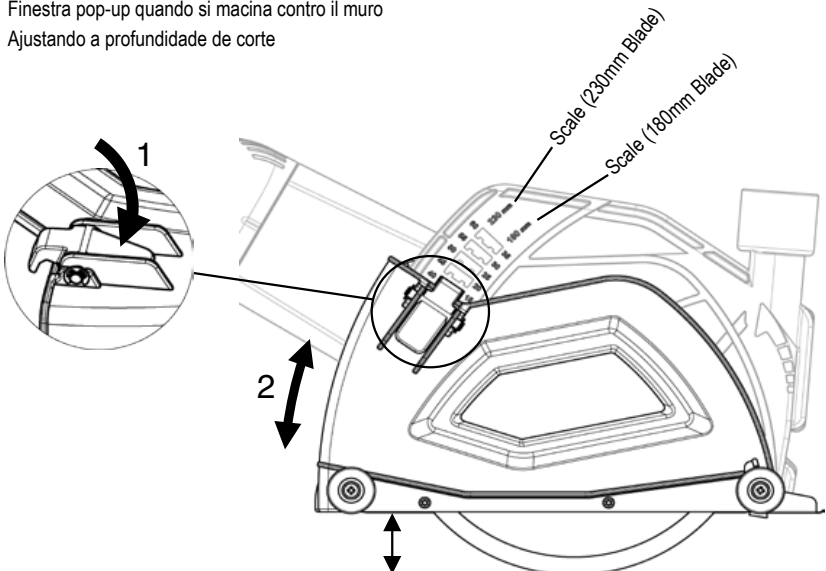
### ► ATTACHING SIDE HANDLE AND EXHAUST HOSE

Anbringen des Seitengriffs und des Abgasschlauchs  
Conexión de la manija lateral y la manguera de escape  
Fixation de la poignée latérale et du tuyau d'échappement  
Collegamento della maniglia laterale e del tubo di scarico  
Colocar o punho lateral e a mangueira de escape



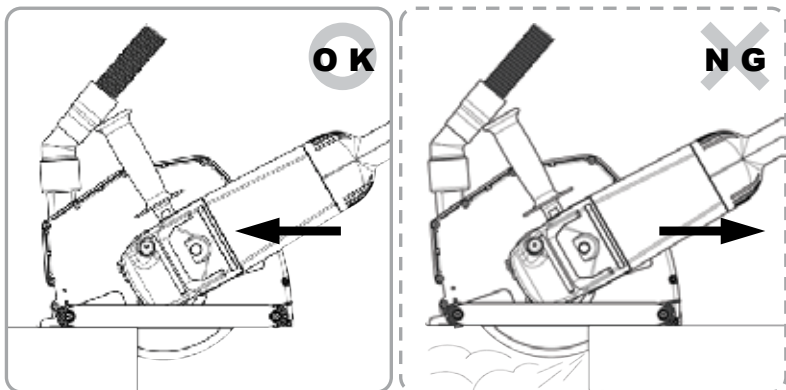
### ► ADJUSTING CUTTING DEPTH

Schnitttiefe einstellen  
Ajuste de la profundidad de corte  
Réglage de la profondeur de coupe  
Finestra pop-up quando si macina contro il muro  
Ajustando a profundidade de corte



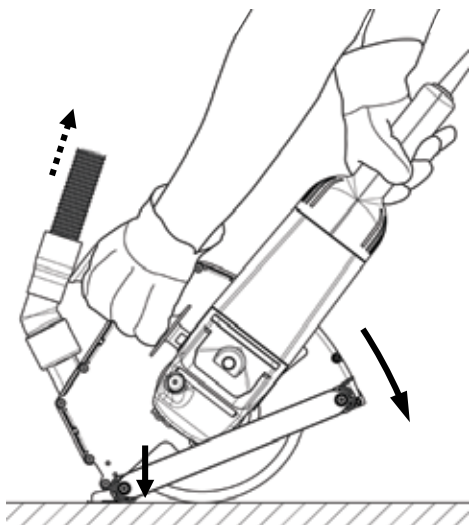
## ► STRAIGHT CUTTING

Gerades Schneiden  
Corte recto  
Coupe droite  
Taglio dritto  
Corte reto



## ► PLUNGE CUTTING

Tauchschneiden  
Corte por inmersión  
Coupe en plongée  
Taglio a tuffo  
Corte por imersão



 **Alpha Professional Tools®**

103 Bauer Drive, Oakland, NJ 07436 • 800-648-7229 • Fax: 800-286-0114  
[www.alpha-tools.com](http://www.alpha-tools.com)

Copyright © 2020 Alpha Professional Tools. All rights reserved.