

Alpha[®] Pneumatic 6" Palm Sander



Part No: ROPS-056
Version 1



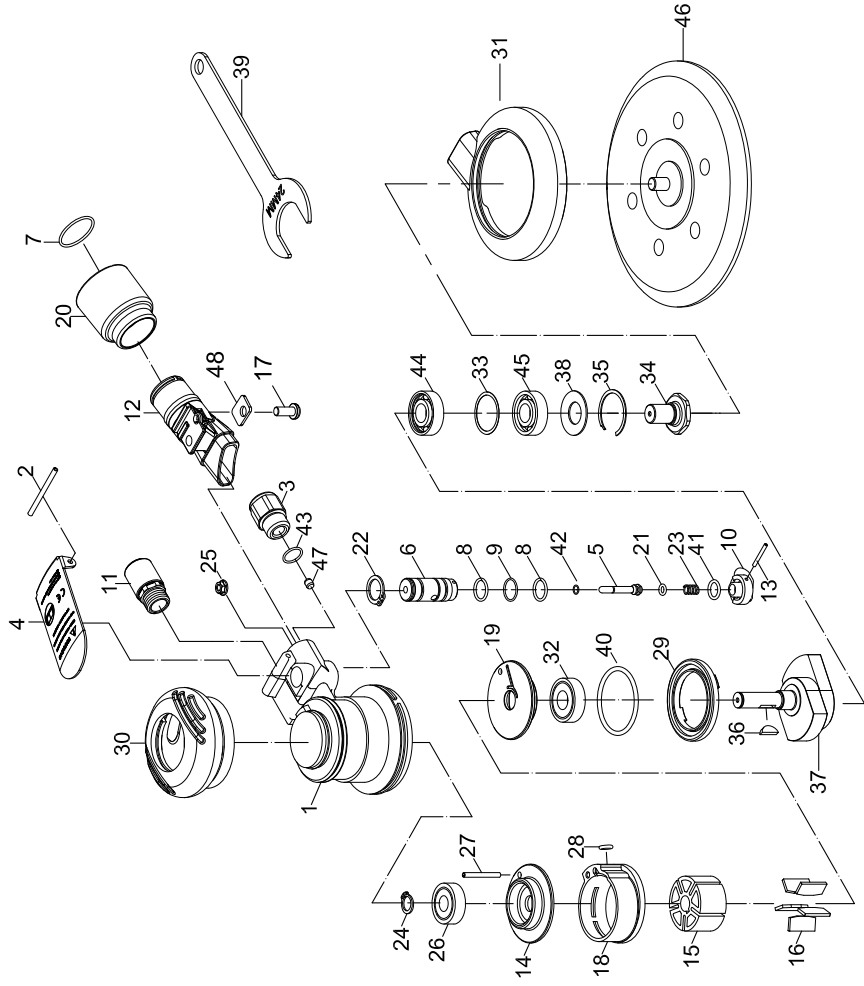
Safety Warning: Always wear eye and respiratory protection as well as proper personal safety equipment when using this product. Comply with ANSI B7.1 and OSHA requirements.

 **Alpha Professional Tools[®]**

103 Bauer Drive, Oakland, NJ 07436 • 800-648-7229 • Fax: 800-286-0114
www.alpha-tools.com

6" Palm Sander

Part No.: ROPS-056



Index No.	Parts No.	Description	Index No.	Parts No.	Description
1	66-6133C01	Housing	25	66-6133C32	Nut (M5*0.8)
2	SP03004000	Spring Pin (3x40L)	26	0600ZZ	Ball Bearing (6000ZZ)
3	66-6133C03	Air Inlet	27	SP03002800	Spring Pin (3x28)
4	66-6133C04	Throttle Lever	28	OR00500200	O-Ring (5x2)
5	66-6133C05	Shaft	29	66-6133C29	Lock Ring
6	66-6133C06	Bushing	30	66-6133C30	Grip Hat
7	OR02105105	O-Ring (21.5x1.5)	31	66-6135C31	Shroud
8	OR01007105	O-Ring(2) (10.7x1.5)	32	06001ZZ	Ball Bearing (6001ZZ)
9	52236	O-Ring (10.5x1)	33	66-6132A13	Washer
10	66-6133C10	Regulator	34	66-6132A34	Shaft
11	66-6133C26-11S	Silencer	35	60-6131335	Snap Ring
12	66-6133C12	Adapter	36	61934	Key
13	51542	Spring Pin (2x18L)	37	66-6132A37	Balancer Shaft
14	66-6133C14	Rear End Plate	38	60-613139	Washer (3x13)
15	66-6132A15	Rotor	39	66-6132A54	Spanner
16	66-6132A16	Rotor Blade(5)	40	OR03904301	O-Ring (39.4x3.1)
17	66-6133A17	Screw (M5x12L)	41	40130	O-Ring (8.8x1.7)
18	66-6133C18	Cylinder	42	OR00200100	O-Ring (2x1)
19	66-6133C19	Front End Plate	43	82247	O-Ring (13.5x1.5)
20	66-6133C20	Swivel Exhaust	44	06001	Ball Bearing (6001)
21	OR00307108	O-Ring (3.68x1.78)	45	06001P	Ball Bearing (6001P)
22	STW14	Retaining Ring (STW-14)	46	60-613142	Pad (6")
23	66-6133C08	Spring	47	66-6133C22	Stopper
24	66-6132A12	Retainer Ring	48	66-6133A11	Washer

* optional part

66-6133C-0001

1411-005

12.25.2014

Alpha® Pneumatic 6" Palm Sander

Part No.: ROPS-056

► FEATURES:

- Composite Motor Housing
- Well-Balanced Design
- Low Vibration
- Lightweight
- Low Noise

► SPECIFICATIONS:

- **Max. Free Speed:** 12,000 RPM
- **Pad Size:** 6" (150mm)
- **Orbit Diameter:** 3/16" (5mm)
- **Spindle Thread:** 5/16"-24
- **Air Inlet:** 1/4" NPT
- **Hose Size ID:** 3/8" (10mm)
- **Air Consumption:** 2 CFM (57L/min)
- **Length:** 7-3/4" (196mm)
- **Weight:** 1.5 lbs (0.7kg)
- **Noise Level:** 76 dB(A)
- **Recommended Air Pressure:** 90 PSI (6.2 Bars)



Copyright © 2015 Alpha Professional Tools. All rights reserved.

06/2015