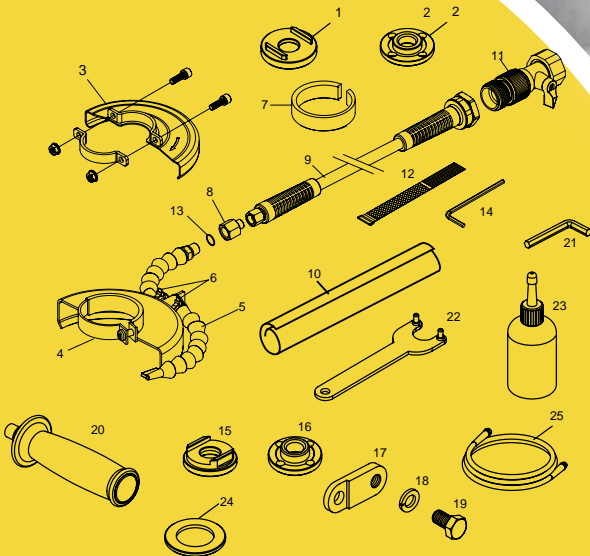


# INDUSTRIAL QUALITY

# ALPHA®



## PSG-125 + Equipment included:



- |   |  |
|---|--|
| 1. Inner Flange for Grinding              | 14. Hex. Wrench 6mm                              |
| 2. Locknut with 7/8" Arbor for Grinding   | 15. Inner Flange for Cutting                     |
| 3. PSG-125 6" Safety Guard                | 16. Locknut with 7/8" Arbor for Cutting          |
| 4. WBC6KIT 6" Safety Guard                | 17. Handle Bracket                               |
| 5. Loc-Line Assembly                      | 18. Spring Washer / M12                          |
| 6. Plastic Tie                            | 19. Bolt / M12x16                                |
| 7. Plastic Collar                         | 20. Side Handle                                  |
| 8. Adapter (1/4 NPT >>> M10*P1.0)         | 21. Hex. Wrench (7mm)                            |
| 9. Water Hose Assembly (15ft./4.5m)       | 22. Pin Wrench                                   |
| 10. Memory Wrap (3ft./1m)                 | 23. Rust Inhibitor Oil (8oz./237ml)<br>(AIR-008) |
| 11. Water Quick Coupler w/ Shut-Off Valve | 24. Height Adjustment Spacer                     |
| 12. Hook & Loop Strap (1-1/2" x 12")      | 25. Air Hose Assembly (15ft./4.5m)               |
| 13. Washer                                |  |

**Kit Part # 5480-1304**

# PSG-125 6" WET CUTTING KIT

## FEATURES + BENEFITS

- Virtually dust-free cutting
- Powerful 1.4 HP motor with speed control governor
- Compact ergonomic aluminum body
- Reversible safety lever throttle
- Two auxiliary handle positions
- Adjustable rotating exhaust
- Built-in oil port for easy maintenance
- Kink-Free Water Hose for Easy Maneuverability and Reducing Operator Fatigue

**MSRP**  
**\$565.95**

 **Alpha Professional Tools®**

16 Park Dr Ste 9, Franklin, NJ 07416 • 800-648-7229 • [www.alpha-tools.com](http://www.alpha-tools.com)

