
Alpha[®] PSC-600 Pneumatic Stone Cutter/Grinder Parts List

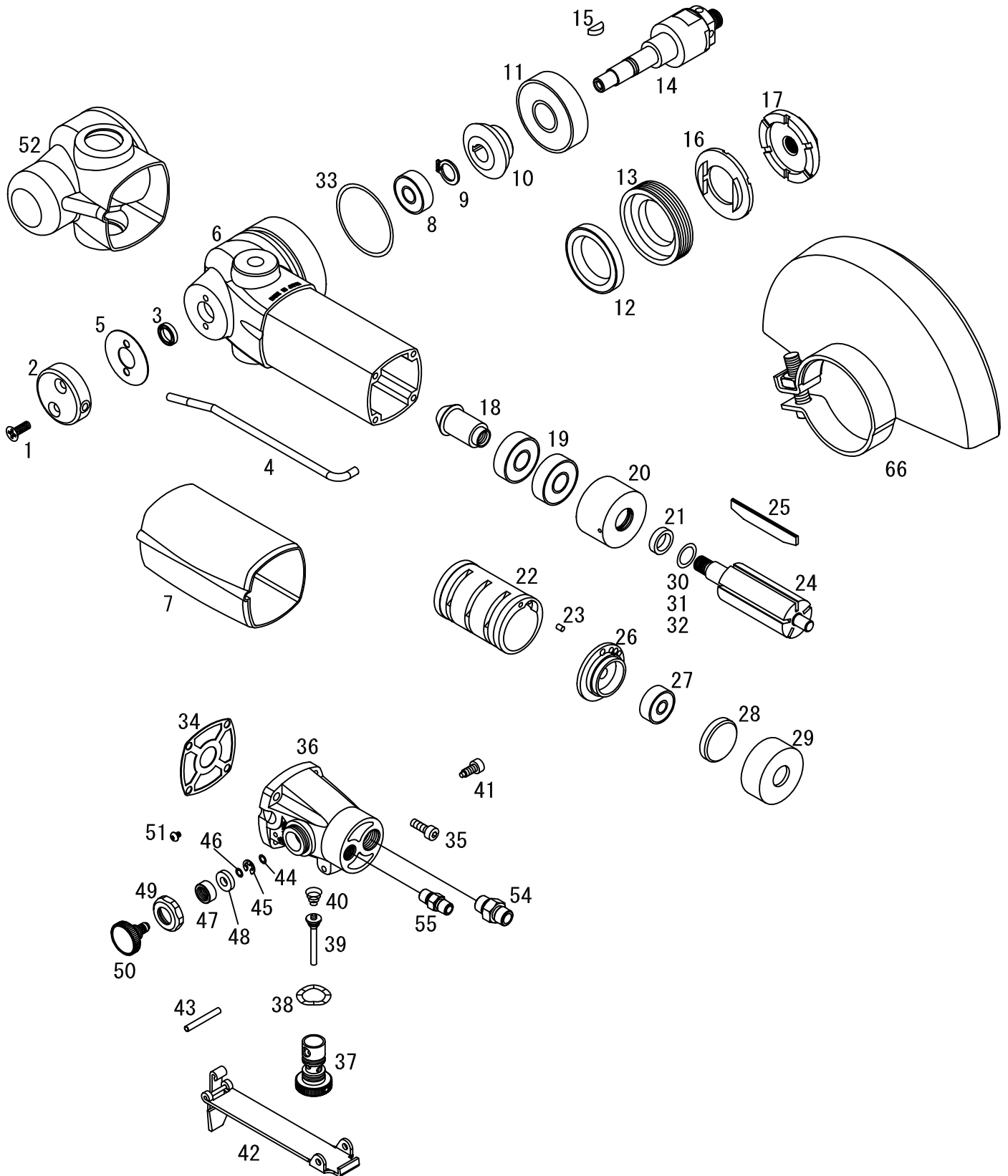


**Part No: PSC-600
Version 1**

 **Alpha Professional Tools**[®]

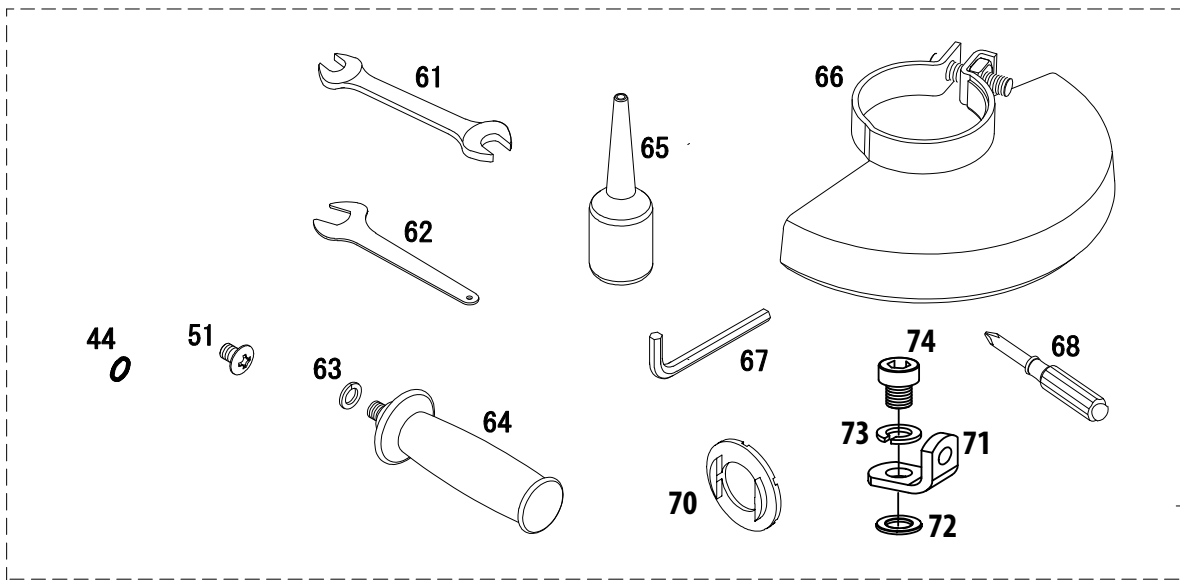
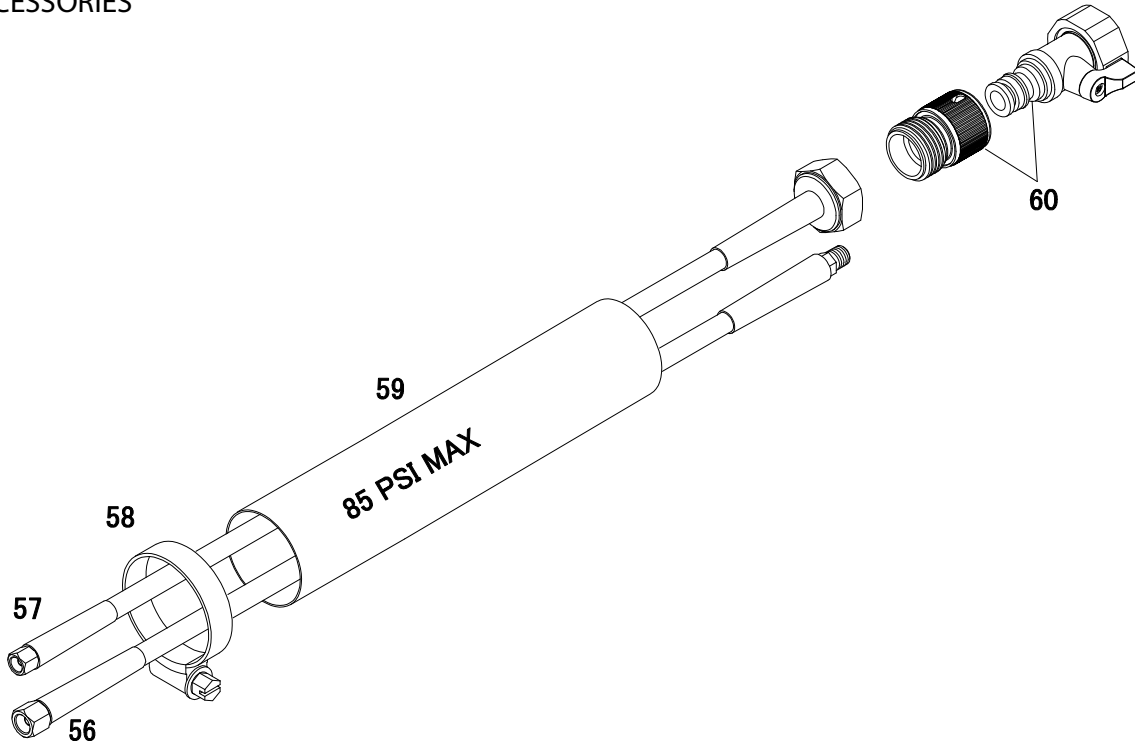
103 Bauer Drive, Oakland, NJ 07436 • 800-648-7229 • Fax: 800-286-0114
www.alpha-tools.com

ALPHA® PSC-600 PNEUMATIC STONE CUTTER/GRINDER SCHEMATIC-1



ALPHA® PSC-600 PNEUMATIC STONE CUTTER/GRINDER SCHEMATIC-2

ACCESSORIES



ALPHA® PSC-600 PNEUMATIC STONE CUTTER/GRINDER PARTS LIST

| DRAWING | PART NO. | DESCRIPTION | QTY |
|---------|----------|---------------------------|-----|
| 1 | 658-01 | Flat Head Screw M4 x 12 | 2 |
| 2 | 658-127 | Pipe-Joint Assembly | 1 |
| 3 | 516-44 | Oil Seal | 1 |
| 4 | 658-09 | W-Pipe | 1 |
| 5 | 658-10 | Head Packing | 1 |
| 6 | 658-11 | Body | 1 |
| 7 | 658-12 | Body Cover | 1 |
| 8 | 516-20 | Ball Bearing (608ZZ) | 1 |
| 9 | 658-16 | Snap Ring (S-10) | 1 |
| 10 | 658-128 | Spiral Bevel Gear | 1 |
| 11 | 516-48 | Ball Bearing (6302ZZ) | 1 |
| 12 | 516-49 | Oil Seal | 1 |
| 13 | 516-50 | 44 Nut | 1 |
| 14 | 658-129 | Spindle for PSC-600 | 1 |
| 15 | 658-22 | Woodruff Key | 1 |
| 16 | 658-130 | Inner Flange for Cutting | 1 |
| 17 | 658-131 | Outer Flange | 1 |
| 18 | 658-132 | Spiral Bevel Pinion | 1 |
| 19 | 658-118 | Ball Bearing (6000ZZ) | 2 |
| 20 | 658-119 | Front Bearing Case | 1 |
| 21 | 658-120 | Rotor Spacer | 1 |
| 22 | 658-101 | Cylinder with Spring Pin | 1 |
| 23 | 658-31 | Spring Pin | 1 |
| 24 | 658-121 | Rotor 5 Vane | 1 |
| 25 | 658-103 | Vanes (5 pc set) | 1 |
| 26 | 516-26 | R-Bearing Case | 1 |
| 27 | 658-146 | Ball Bearing (626ZZ) | 1 |
| 28 | 516-28 | Bearing Cap | 1 |
| 29 | 658-122 | Air Inlet Case | 1 |
| 30 | 658-123 | Shim (0.10mm) | 1 |
| 31 | 658-124 | Shim (0.03mm) | 1 |
| 32 | 658-125 | Shim (0.05mm) | 1 |
| 33 | 658-84 | Shim (0.20mm) | 1 |
| 34 | 658-38 | Body Gasket | 1 |
| 35 | 658-145 | Socket Head Screw M4 x 15 | 4 |
| 36 | 658-133 | Endcase Assembly | 1 |
| 37 | 658-134 | Regulator Assembly | 1 |

ALPHA® PSC-600 PNEUMATIC STONE CUTTER/GRINDER PARTS LIST

| DRAWING | PART NO. | DESCRIPTION | QTY |
|---------|-----------|---|-----|
| 38 | 658-135 | Wave Washer | 1 |
| 39 | 658-136 | Air Valve | 1 |
| 40 | 658-137 | Valve Spring | 1 |
| 41 | 658-138 | Cap Bolt | 1 |
| 42 | 658-139 | Throttle Lever | 1 |
| 43 | 658-140 | Spring Pin | 1 |
| 44 | 658-108 | O-Ring | 2 |
| 45 | 658-65 | Retaining Ring Type-E | 1 |
| 46 | 658-64 | O-Ring | 1 |
| 47 | 658-107 | Nut M8 | 1 |
| 48 | 658-67 | Washer | 1 |
| 49 | 658-141 | Nut M16 | 1 |
| 50 | 658-106 | Water Valve | 1 |
| 51 | 658-91 | Screw (w/O-Ring Seal (1pc in tool + 1 spare)) | 2 |
| 52 | 658-111 | Head Cover (Yellow) | 1 |
| 54 | 1030-1021 | Union fitting for air 1/4" | 1 |
| 55 | 1030-1020 | Union fitting for water 1/8" | 1 |
| 56 | 1030-0002 | Air Hose Assembly | 1 |
| 57 | 1030-0003 | Water Hose Assembly | 1 |
| 58 | 1030-1104 | Hose Clamp | 1 |
| 59 | 658-95 | Exhaust Hose | 1 |
| 60 | 658-113 | Water Quick Coector with Shut off Valve | 1 |
| 61 | 1030-1103 | Double Open End Wrench (19mm/22mm) | 1 |
| 62 | 658-62 | Single Open End Wrench (22mm) | 1 |
| 63 | 658-13 | Spring Washer M10 | 2 |
| 64 | 658-14 | Side Handle | 1 |
| 65 | AIR008 | Rust Inhibitor Oil 8 oz.(237ml) | 1 |
| 66 | 658-142 | 6" Safety Guard Assembly | 1 |
| 67 | 658-143 | Hex. Wrench 6mm | 1 |
| 68 | 658-114 | Phillips Screwdriver P1 | 1 |
| 69 | 658-149 | Complete End Case Assembly | 1 |
| 70 | 658-150 | Inner Flange for Grinding | 1 |
| 71 | 658-151 | L-Bracket Assembly | 1 |
| 72 | 658-152 | Flat Washer | 1 |
| 73 | 658-153 | Spring Lock Washer SS (M10) | 1 |
| 74 | 658-154 | Screw SHC SS (M10x16) | 1 |